



Motomachi Ramen Shijo Karasuma shop

Address:664-27 Bantoyacho Nakagyo-ku, Kyoto-shi, Kyoto 604-8143

Navigator:5-minute walk from Hankyu Karasuma Station,exit 18 Outside Kyoto Daimaru Department store, Higashinotoin exit

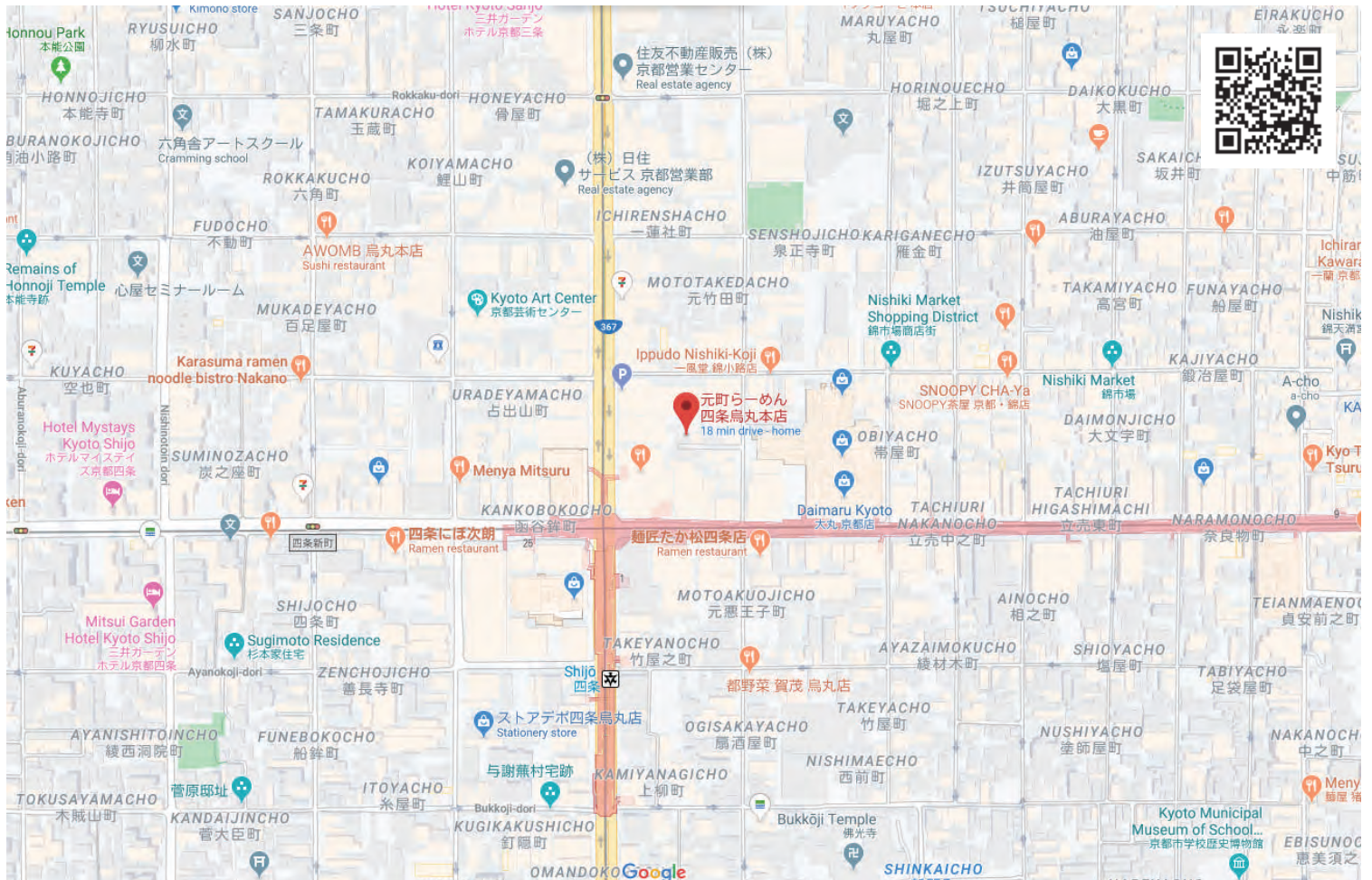
TEL:075-221-3910

OPEN:11:00 - 24:00 (or until the soup runs out)

Closed: Sunday

1F non-smoking 2F smoking

All prices include tax



The Original (traditional Tamari)

Light and clean blend of white soy sauce and bonito broth, recommended for ladies and children



らーめん
Ramen



白らーめん
Shiro Ramen

Ramen 800

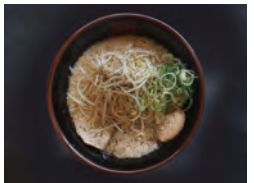
Shiro(white) Ramen 800



Seabura Shoyu Ramen
A ramen unique to Kyoto **800**
背脂醤油らーめん



Beef Tendon Ramen **1000**
牛すじらーめん



Black Pepper Ramen **800**
黒コショウらーめん



Beef Tendon Shiro (white)Ramen **1000**
白牛すじらーめん



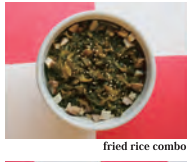
Shiro Vegetable Ramen **1000**

Shiro Ramen topped with a variety of vegetables; a dab of butter makes it even more delicious. Provides half the daily recommended requirement for vegetables.
野菜らーめん

Topping
Raw garlic: free
Raw egg: +50
Seasoned egg: +100
OMORI (larger serving): +200
Substitute for ultra-fine noodles: free

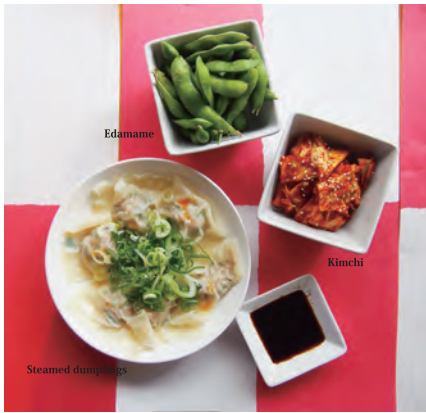
Set meal

- A** Aセット(牛すじ丼) set (beef bowl combo) any Ramen **+400**
- B** Bセット(チャーシュー丼) set (chashyu bowl combo) any Ramen **+400**
- C** Cセット(高菜ごはん) set (takana (pickled mustard leaf) rice bowl) any Ramen **+300**
- E** Eセット(玉子かけごはん) set (raw egg and rice combo) any Ramen **+250**
- F** からあげ定食 Fried Chicken set (fried chicken + salad + rice combo) **+400**
- M** マルサワセット Marusawa set (two-piece fried chicken + chashyu pork) **400**
- M** 元町セット Motomachi set (chashyu pork + kimchi) **600**



- Rice ごはん
- (small) **100**
 - (medium) **150**
 - (large) **200**

Sides



- Edamame 枝豆 **250**
- Kimchi キムチ **300**
- Steamed dumplings 水餃子 **500**

- Cold cucumber 冷やしきゅうり **250**
- Cold tofu 冷奴 **300**
- Spicy cold tofu ピリ辛冷奴 **300**
- Cabbage salad キャベツのサラダ **350**
- Chashyu 1serving チャーシュー **500**
2serving **800**
- French fries フライドポテト **300**
たこの唐揚げ
- Deep-fried octopus **500**
- Beef stew 牛すじ煮込み **500**
揚げぎょうざ (サルサ・カレー)
- Fried dumplings **500**
手羽先チュウリップの唐揚げ
- Deep-fried chicken (4) **600~**

Drink

- Bottled beer 瓶ビール **500**
- Sapporo Black (medium)
- Whiskey & soda ハイボール **400**
ノンアルコールビール
- Non-alcoholic beer **300**
- Shochu 焼酎 **500**
- Sake (one cup) 日本酒 **350**
- Oolong tea, cola, orange juice **250**
ウーロン茶、コーラー、オレンジジュース



**All prices include tax
Cash only**